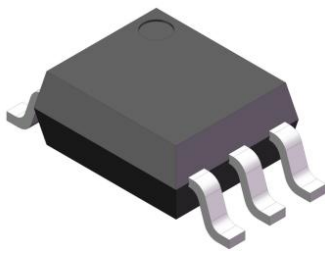
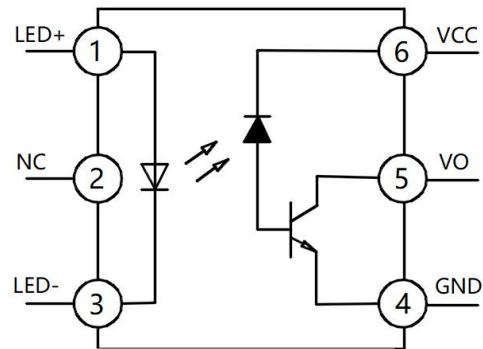


XLM453L

Product packaging logic diagram



SOP5



Pin Configuration

Features

- Very high speed: 1MBit/s
- High isolation voltage between input and output ($V_{iso} = 3750V$ rms)
- Operating Temperature: $-40^{\circ}C \sim 100^{\circ}C$
- Environmentally friendly products, compliant with CQC, UL, and VDE requirements

Mechanical Data

- Case: SOP5
- Molding Compound: UL Flammability Classification Rating 94V-0
- Terminals: Matte tin-plated leads; solder ability-per MIL-STD-202, Method 208

Applications

- Widely used in communications and networking, industrial automation and control, motor drive and energy management, medical equipment, and automotive electronics fields.
- Communications and Networking: Fiber optic communication, data center.
- Industrial Automation and Control: PLC and frequency converter, Servo drive system, Industrial robot.
- Motor Drive and Energy Management: Motor control, Motor protection, Power electronics, Consumer Electronics.
- Emerging Technology Fields: Intelligent Transportation System, Medical equipment, Automatic production line.
- Automotive Electronics: In-vehicle Network System, Battery Management System (BMS), EV Charging Station.



XLM453L

Ordering Information

<u>XL</u>	<u>M453L</u>	<u>(X)</u>	<u>(X)</u>	<u>(X)</u>	-	<u>(U)</u>	<u>(N)</u>	<u>(Y)</u>
①	②	③	④	⑤		⑥	⑦	⑧

- ① Brand (XL)
- ② Product series (M453L)
- ③ Package type(SOP5:None)
- ④ Halogen option (None : Halogen free)
- ⑤ CTR Bank(None)
- ⑥ Lead frame (None: Copper)
- ⑦ Customer option 1 (0-9 or A- Z or none)
- ⑧ Customer option 2 (0-9 or A- Z or none)

Part Number	Package	Shipping Quantity	Marking Code
XLM453LP	SOP5	3000pcs / Tape & Reel	XLM453L

Marking Information

- " XL" denotes brand
- " M453L" denotes Product series.
- " Y" denotes Year : A(2024), B(2025), C(2026)
- " WW" denotes Week' s number
- " N" denotes the day of Week.



Maximum Ratings (@ T_A = 25°C unless otherwise specified)

Parameter		Symbol	Value	Unit
Input	Forward Current	I _F	50	mA
	Reverse Voltage	V _R	5	V
	Power Dissipation	P _D	45	mW
Output	Collector Output	P _O	100	mW
	Output Current	I _O	16	mA
	Supply Voltage	V _{CC}	30	V
	Output Voltage	V _O	20	V

XLM453L

Thermal Characteristics

Parameter	Symbol	Value	Unit
Isolation Voltage *2	V _{ISO}	3750	V _{rms}
Operating Temperature	T _{OPR}	-40 ~ +100	°C
Storage Temperature Range	T _{STG}	-55 ~ +125	°C
Soldering Temperature *3	T _{SOL}	260	°C

Notes:

1. Pulse width ≤ 1μs, Duty ratio: 0.001
2. 40 to 60% RH, AC for 1 minute
3. For 10 seconds

Electrical Characteristics (@ T_A = 25°C unless otherwise specified)

Parameter		Symbol	Test Condition	Min.	Typ.	Max.	Unit
Input	Forward Voltage	V _F	I _F = 16mA	-	1.45	1.7	V
	Reverse Breakdown Voltage	B _{VR}	I _R = 10μA	5	20	-	V
	Diode Temperature Coefficient	ΔV _F /ΔT _A	I _F = 10mA	-	-1.6	-	mV/°C
Output	High Level Supply Current	I _{CCH}	V _{CC} = 15V, I _F = 0mA V _O = Open	-		1	μA
			T _A = 0-70°C			2	μA
	Low Level Supply Current	I _{CCL}	V _{CC} = 15V, I _F = 16mA, V _O = Open	-	120	800	μA
Transfer Characteristics	High Level Output Current	I _{OH}	I _F = 0mA, V _O = 5.5V V _{CC} = 5.5V		0.001	0.5	μA
			I _F = 0mA, V _O = 15V V _{CC} = 15V		0.005	1	
			T _A = 0-70°C			50	
	Low Level Output Voltage	V _{OL}	V _{CC} = 4.5V, I _F = 16mA I _O = 3mA	-	0.1	0.4	V
			V _{CC} = 4.5V, I _F = 16mA I _O = 2.4mA		0.1	0.5	V
	Current transfer ratio	CTR	I _F = 16mA, V _{CC} = 4.5V V _O = 0.4V	19	24	80	%
			I _F = 16mA, V _{CC} = 4.5V V _O = 0.5V	15	25		
Isolation Resistance	R _{IO}	V _{IO} = 500Vdc 40~60% R.H.	-	1 × 10 ¹²	-	Ω	
Floating Capacitance	C _{IO}	f = 1MHz	-	0.6	-	pF	

XLM453L

Switching Characteristics (@ $T_A = -40^{\circ}\text{C} \sim 85^{\circ}\text{C}$, $V_{CC} = 5\text{V}$, $I_F = 7.5\text{mA}$, unless otherwise specified)

Parameter	Symbol	Test Condition	Min.	Typ.	Max.	Unit
Propagation Delay Time to Output HIGH Level	T_{PLH}	$I_F = 16\text{mA}$, $R_L = 1.9\text{k}\Omega$, $T_A = 25^{\circ}\text{C}$	-	150	800	ns
		$I_F = 16\text{mA}$, $R_L = 1.9\text{k}\Omega$			800	
Propagation Delay Time to Output Low Level	T_{PHL}	$I_F = 16\text{mA}$, $R_L = 1.9\text{k}\Omega$, $T_A = 25^{\circ}\text{C}$	-	200	800	ns
		$I_F = 16\text{mA}$, $R_L = 1.9\text{k}\Omega$			800	
Common Mode Transient Immunity(at Logic High)	$ CMH $	$T_A = 25^{\circ}\text{C}$, $I_F = 0\text{mA}$ $ V_{CM} = 10\text{V(Peak)}$ $C_L = 15\text{pF}$, $R_L = 1.9\text{k}\Omega$	5000	-	-	$\text{V}/\mu\text{s}$
Common Mode Transient Immunity (at Logic Low)	$ CML $	$T_A = 25^{\circ}\text{C}$, $I_F = 16\text{mA}$ $ V_{CM} = 10\text{V(Peak)}$ $C_L = 15\text{pF}$, $R_L = 1.9\text{k}\Omega$	5000	-	-	$\text{V}/\mu\text{s}$

XLM453L

Ratings and Characteristics Curves (@ $T_A = 25^\circ\text{C}$ unless otherwise specified)

Fig.1 Normalized CTR vs Forward Current

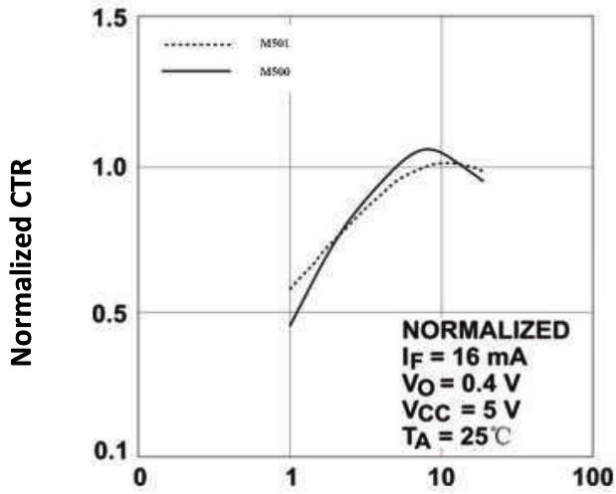


Fig.2 Normalized CTR vs Temperature

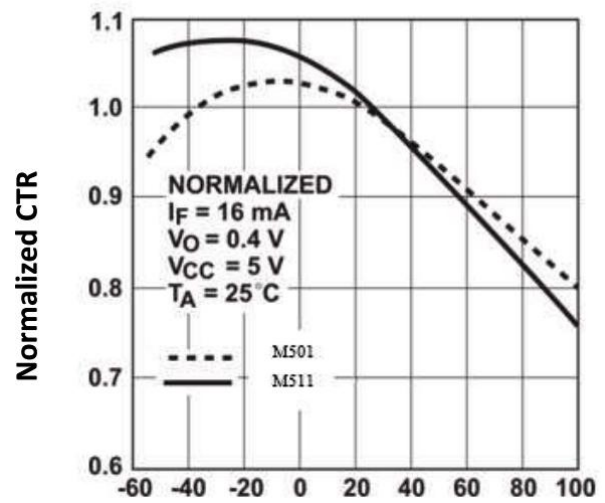


Fig.3 Output Current vs Output Voltage

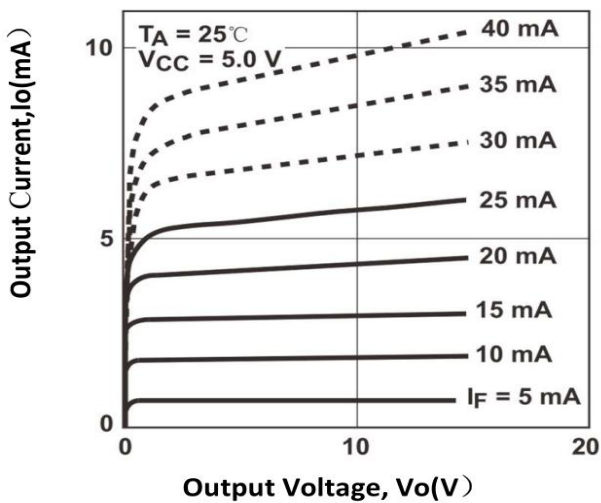


Fig.4 Logic High Output Current vs Temperature

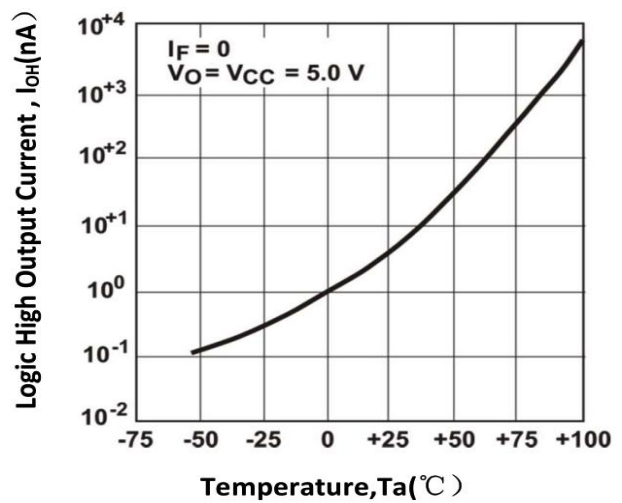


Fig.5 Propagation Delay vs Temperature

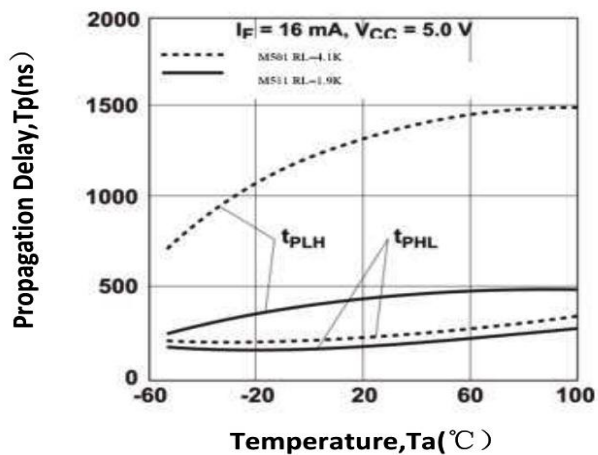
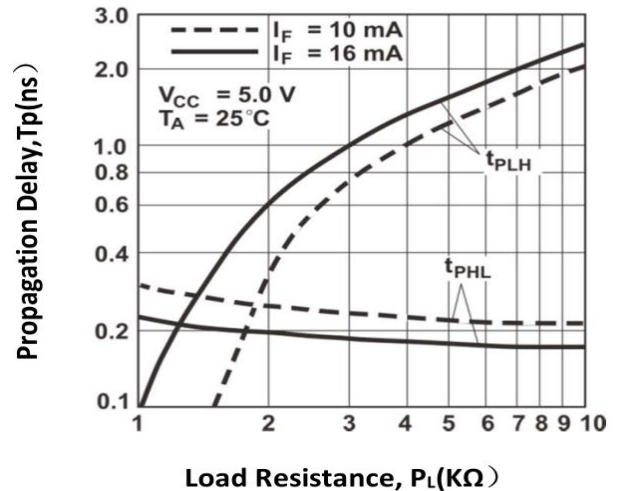


Fig.6 Propagation Delay vs Load Resistance



XLM453L

Ratings and Characteristics Curves (@ $T_A = 25^\circ\text{C}$ unless otherwise specified)

Fig.7 Test Circuit and Wave forms for t_{PLH} , t_{PHL} , t_r and t_f

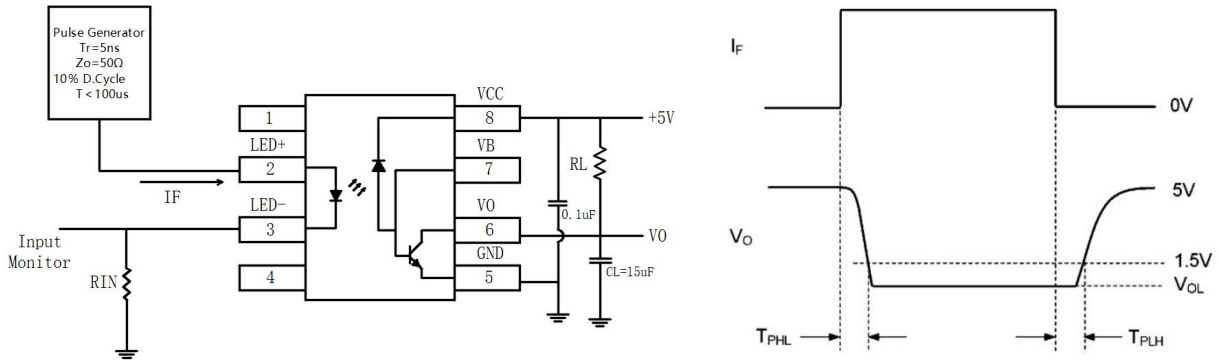
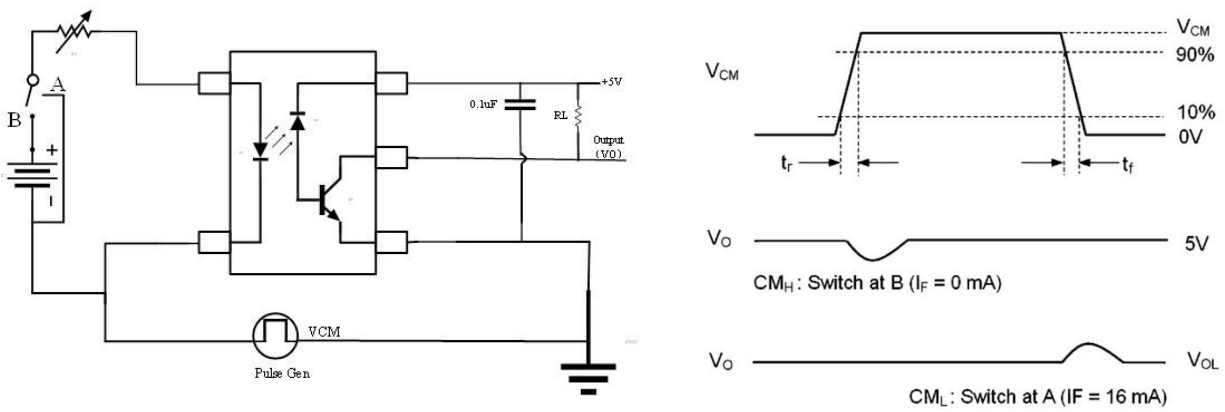


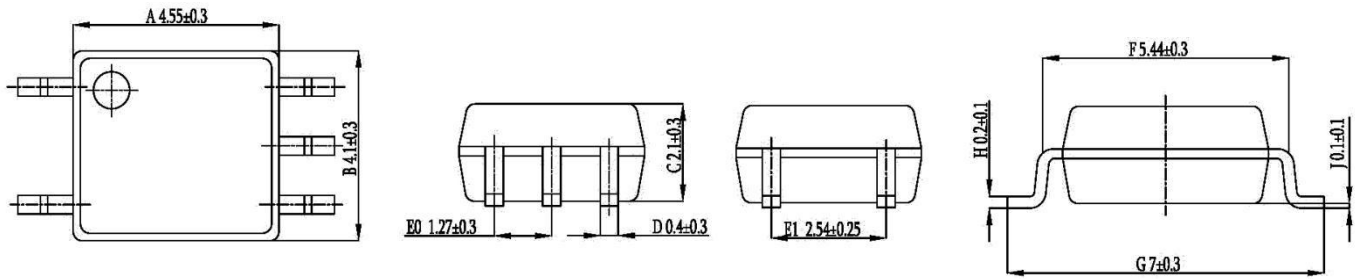
Fig.8 Test Circuit Common Mode Transient Immunity



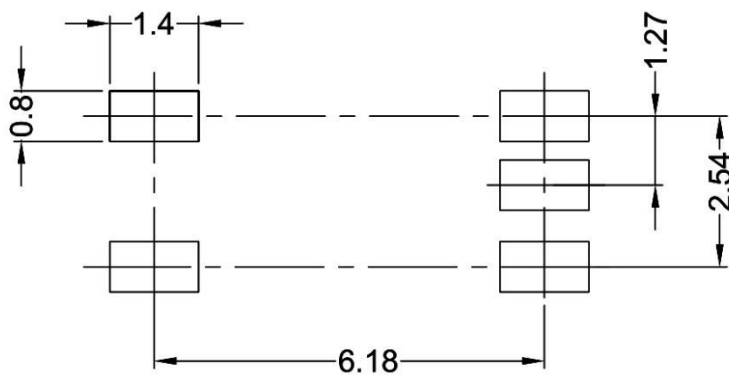
XLM453L

Package Outline Dimensions (unit: mm)

SOP5

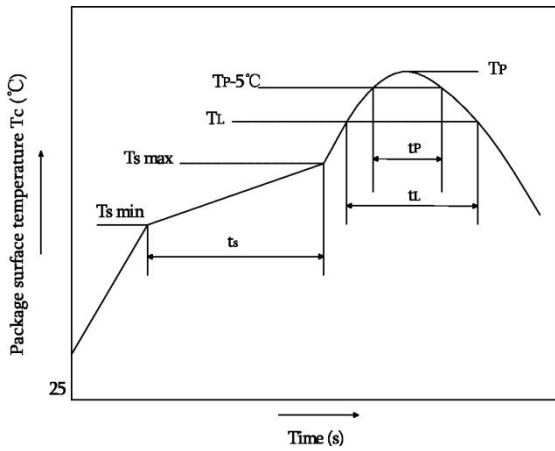


SOLDERING FOOTPRINT (unit: mm)



XLM453L

Reflow soldering

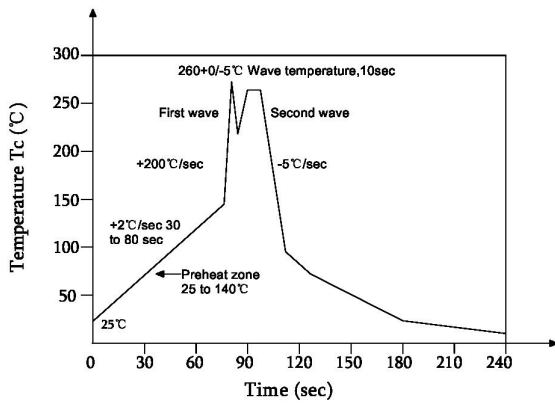


	Symbol	Min	Max	Unit
Preheat temperature	Ts	150	200	°C
Preheat time	ts	60	120	s
Ramp-up rate(TL to TP)			3	°C/s
Liquidus temperature	T _L	217		°C
Time above T _L	t _L	60	150	s
Peak temperature	T _P		260	°C
Time during which T _c is between (T _P -5) and T _P	t _p		30	s
Ramp-down rate(T _P to T _L)			6	°C/s

Note:

Reflow soldering is recommended at the temperatures and times shown, no more than three times.

Wave soldering



Profile feature	
Average ramp-up rate	~200°C/s
Heating rate during preheat	1°C/s to 2°C/s typical; 4°C/s maximum
Final preheat temperature Ts	~130°C
Preheat time (25°C to Ts)	>60s
Peak temperature Tp	260°C
Time within peak temperature tp	10s
Ramp-down rate	5°C/s maximum

Soldering with hand soldering iron

- A. Hand soldering iron is only used for product rework or sample testing.
- B. Hand soldering iron requirements: Temperature: 360 °C+5°C within 3s.

XLM453L

Packing

Package Type	Packing Form	Quantity per Tube & Reel	Quantity per Box	Quantity per Carton	Antistatic Bag Specification	Box Specification	Carton Specification	Note
SOP5	Reel(φ330mm)	3000pcs/reel	2 reels /box	10 boxes /ctn	380*420mm	350*340*60mm	365*330*370mm	Guard band 200mm/min.

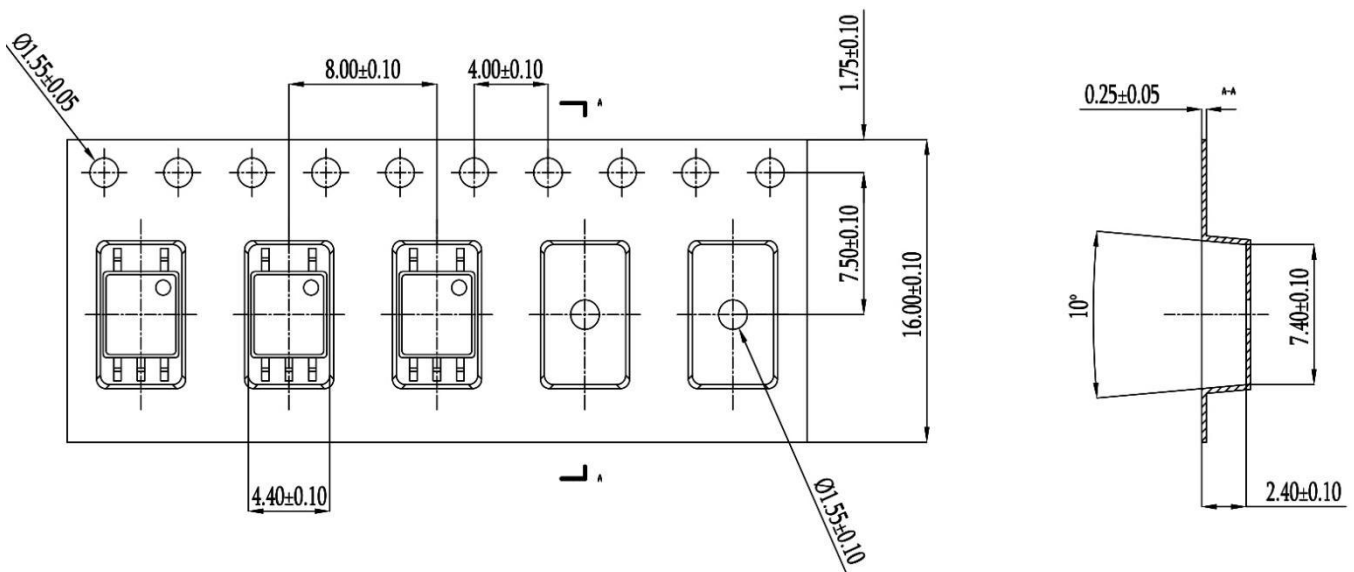
- Summary table

- SOP5 (Reel)

Qty/reel: 3000pcs. Qty/box: 6000pcs.

Qty/ctn: 60000pcs.

Schematic: (unit: mm)



Attention

- XINGLIGHT implements dynamic technical updates. Specifications are subject to change. Refer to the official website for the latest version.
- Users must strictly adhere to specified conditions. Failures caused by misuse (overload, high temperature, incompatible circuits) are excluded from warranty.
- Contact technical support for customized validation in critical applications (medical devices, industrial control).
- This document is valid until Dec 31, 2026. Updates will be notified on the official website.
- For further clarification on technical specifications or application solutions, please contact us through official channels.